

IDM - SLH - A60 - INT

Internal Hinged Doors

Sheet 2.1.1.5 - Version 10/08/2022

Performances

- Fire resistance A0/A60 in accordance with IMO Resolution MSC.307(88).
- Explosion resistance Up to 7 kPa, 200ms blast, isosceles (no destruction of door performance).
- Tightness Smoke tight
- Sound insulation Standard sound insulation value of 36 dBA.
- Thermal insulation $U = 0.7 \text{ W/m}^2\text{K}$ (doorleaf).
- Ease of operation Standard opening pressure of 65N.
- Durability Design lifetime of over 30 years with normal maintenance.
- Efficiency for maintenance Easy accessibility and spare parts are normally available from stock.
- Aesthetics Thickness: 73 mm.
 - galvanized steel DX51D + Z275 - standard 2-layer onshore coating.
 - stainless steel 316L - standard 2-layer onshore coating.Standard RAL end colors included and chosen by client.

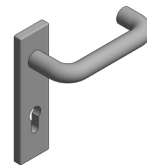
Technical drawing



Hardware



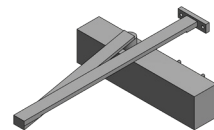
Center latch
ID1120 / ID1130



Doorhandle
ID1140



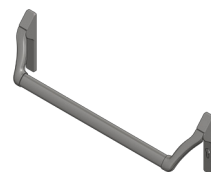
Stainless steel
hinges ID252



Doorcloser ID260



Seal ID122



Panic opening device
ID281 / ID1171