

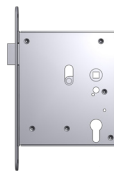
Performances

- Fire resistance H60/H120 in accordance with IMO Resolution MSC.307(88).
- Jet Fire resistance J30/J60.
- Explosion resistance Up to 110 kPa, 200ms blast isosceles (no destruction of door performance).
- Gas tightness Standard air leakage rate 0.3 m³/m²/h @ 50 Pa.
- Air tightness Class 4 in accordance with EN12207.
- Wind tightness Class C4 in accordance with EN12210.
- Water tightness Class 6A in accordance with EN12208.
- Sound insulation Standard sound insulation value of 36 dB.
- Thermal insulation U = 0.5 W/m²K.
- Ease of operation Standard opening pressure of 65N.
- Durability Design lifetime of over 30 years with normal maintenance.
- Efficiency for maintenance Easy accessibility and spare parts are normally available from stock.
- Optional
 - bullet resistance FB7 non-splinter in accordance with EN 1522/1523.
 - in full compliance with Norsok C-002.
 - sound insulation value up to 48 dB.
- Aesthetics Thickness: 115 mm.
Doors can be supplied in:
 - stainless steel 316L - micropeen / glassblasting finish.
 - stainless steel 316L - standard 2-layer onshore coating.
 - stainless steel 316L - standard 3-layer offshore coating.
 Standard RAL end colors included and chosen by client.

Technical drawing



Hardware



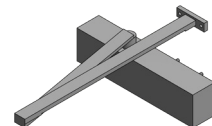
Stainless steel center latch ID211 / ID221



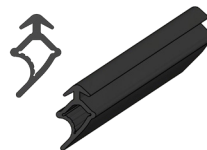
Doorhandle ID155 / ID156



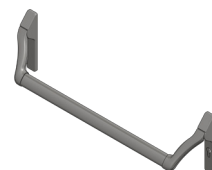
Stainless steel hinges ID254



Doorcloser ID261



Seal ID164



Panic opening device ID281