

IDM - DLH - A60 - FP

External & Internal Hinged Doors

Sheet 1.2.1.4 - Version 12/08/2022

Performances

- Fire resistance A0/A60 in accordance with IMO Resolution MSC.307(88).
- Explosion resistance Up to 0,3 bar blast overpressure at 200ms blast, isosceles.
- Gas tightness Standard air leakage rate $<0.5 \text{ m}^3/\text{m}^2/\text{h}$ @ 50 Pa.
- Air tightness Class 4 in accordance with EN12207.
- Wind tightness Class C4 in accordance with EN12210.
- Water tightness Class 2A in accordance with EN12208.
- Sound insulation Standard sound insulation value of 36 dBA.
- Thermal insulation $U = 0.7 \text{ W}/\text{m}^2\text{K}$.
- Ease of operation Standard opening pressure of 65N.
- Durability Design lifetime of over 30 years with normal maintenance.
- Efficiency for maintenance Easy accessibility and spare parts are normally available from stock.
- Optional Sound insulation value of 48 dB.

- Aesthetics Thickness: 73 mm.
 - galvanized steel DX51D + Z275 - standard 2-layer onshore coating.
 - galvanized steel DX51D + Z275 - standard 3-layer offshore coating.
 - stainless steel 316L - standard 2-layer onshore coating.
 - stainless steel 316L - standard 3-layer offshore coating.Standard RAL end colors included and chosen by client.

Technical drawing



Hardware



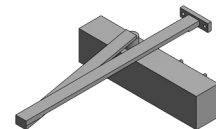
Center latch
ID1120 / ID1130



Doorhandle
ID1140



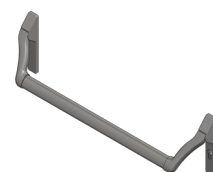
Stainless steel
hinges ID252



Doorcloser ID260



Seal ID122



Panic opening device
ID281 / ID1171