

IDM - DLH - A60 - Double Seal

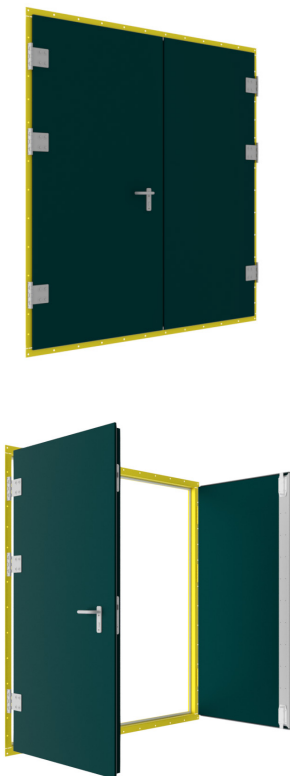
Heavy Duty External Doors

Sheet 1.2.1.1 - Version 10/08/2022

Performances

- Fire resistance A0/A60 in accordance with IMO Resolution MSC.307(88).
 - Explosion resistance Up to 10 kPa, 200ms blast isosceles (no destruction of door performance).
 - Gas tightness Standard air leakage rate 0.3 m³/m²/h @ 50 Pa.
 - Air tightness Class 2 in accordance with EN12207.
 - Wind tightness Class C4 in accordance with EN12210.
 - Water tightness Class E1050 in accordance with EN12208.
 - Sound insulation Standard sound insulation value of 36 dB.
 - Thermal insulation U = 0.5 W/m²K.
 - Ease of operation Standard opening pressure of 65N.
 - Durability Design lifetime of over 30 years with normal maintenance.
 - Efficiency for maintenance Easy accessibility and spare parts are normally available from stock.
-
- Optional
 - bullet resistance FB7 non-splinter in accordance with EN 1522/1523.
 - in full compliance with Norsok C-002.
 - sound insulation value up to 48 dB.
 - Aesthetics
 - Thickness: 115 mm.
 - Doors can be supplied in:
 - galvanized steel DX51D + Z275 - standard 2-layer onshore coating.
 - galvanized steel DX51D + Z275 - standard 3-layer offshore coating.
 - stainless steel 316L - micropeen / glassblasting finish.
 - stainless steel 316L - standard 2-layer onshore coating.
 - stainless steel 316L - standard 3-layer offshore coating.
 - Standard RAL end colors included and chosen by client.

Technical drawing



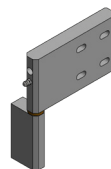
Hardware



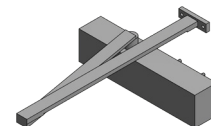
Stainless steel center latch
ID211 / ID221



Doorhandle
ID155 / ID156



Stainless steel
hinges ID200



Doorcloser ID261



Seal ID122



Panic opening device
ID281