

G21 Fire Panel - J30/H60

External Sandwich Walls

Sheet 1.0.00.1 - Version 13/06/2022

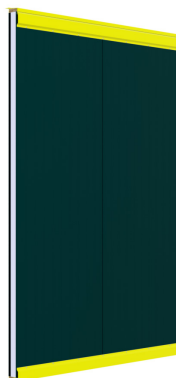
Performances

- Fire resistance J30 in accordance with ISO 22899-1:2007 (based on TMFEA*).
H60 in accordance with IMO Resolution MSC.307(88).
- Sound insulation 32 dB in accordance with EN ISO 140-3.
- Thermal insulation $U = 0.24 \text{ W/m}^2\text{K}$.
- Durability Design life of 30 years with minimum maintenance.
- Weight $32,1 \text{ kg / m}^2$ at 172 mm panel thickness.
- Core density 120 kg/m^3 - EN 1602:1997.
- Air tightness $<0.1 \text{ m}^3/\text{m}^2/\text{h}$ at 50 Pa, according to EN 12114:2001.
- Water tightness Class C according to EN 14509:2007.
No water penetration at test pressure 2100 Pa, test method A, EN 12865:2002.

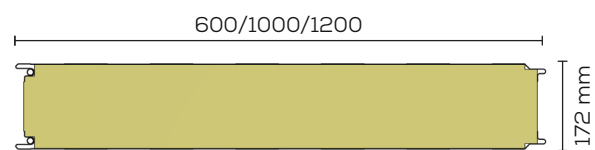
Materials

- Core material 172 mm mineral wool (non-combustible).
- Fire exposed side 0.6 mm stainless steel 316 L 2B (optional 0.6 mm skin 25 micron PVDF standard RAL color).
- Non-fire side 0.6 mm coil coated galvanized steel sheet S280GD + ZA with Prisma coating (optional stainless steel 304 or 316).
 - Thickness 40 micron - EN 13523-1.
 - Corrosion resistance 1000 h salt spray test - EN 13523-8.
 - Corrosion resistance 1000 h humidity - EN 13523-26.
 - Corrosion resistance category RC5 - EN 10169:2010.
 - UV resistance RUV4 - EN 10169:2010.

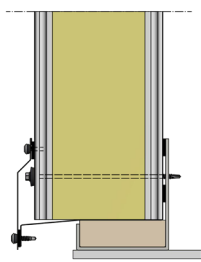
Overview



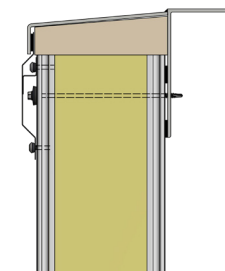
Front view (3D)



Horizontal section



Bottom section



Top section