

IDM - SLS - RWS - EI₁ 120/EW 120

Tunnel Doors | Non-Fire side mounted

Sheet 1.0.0.3 - Version 11/07/2023

Performances

Fire resistance	EI ₁ 120 in accordance with Efectis-R0695:2020, RWS + HCM fire curve. EW 120 in accordance with Efectis-R0695:2020, RWS + HCM fire curve.
Clear opening	900 x 2100 mm (tested), other dimensions upon request.
Air permeability	Class 4 in accordance with EN12207*.
Resistance to wind load	Class C4 in accordance with EN12210*.
Water tightness	Class 6A in accordance with EN12208*.
Sound insulation	Standard sound insulation value of 34 (0;-1) dB*.
Thermal insulation	U = 0.5 W/m ₂ K.
Ease of operation	Standard opening force of 80N with ERGO latch.
Durability	Design lifetime of over 30 years with normal maintenance.
Efficiency for maintenance	Easy accessibility and spare parts are normally available from stock. Optional maintenance service available at InterDam B.V.
Optional	<ul style="list-style-type: none">- Magnalock electronic locking for access control and/or alarm system.- Open-close sensor.- Euro cylinder in lock.- Electric operation.- Limit switch, handle operated.- 'Running Man' sticker.- Door number indication sticker.
Aesthetics	Thickness 115mm. Doors can be supplied in: Galvanized steel DX51D + Z275 - standard 3-layer CX coating. Standard RAL end colors included and chosen by client.

Technical drawing



Hardware



Stainless steel
centre latch
ID314 / ID315



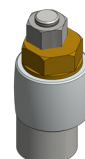
Doorhandle
Ergo latch
ID361 / ID362



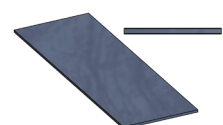
Stainless steel
railing ID331



Stainless steel
rollers ID332



Rollerguide ID322



Seals ID161

* extrapolated/based on detailed door tests of similar doors.